

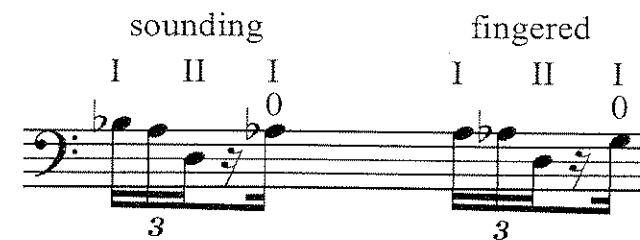
# *descent, debris, debrief*

for amplified double bass solo

Erik Lund (1997)

## *performance notes:*

- string tuning is Eb-A-D-Ab, as indicated on score. thus, notes played on the **I** string will sound 1 semitone higher than usual, and notes played on the **IV** string will sound 1 semitone lower than usual. the score is always written in sounding pitch, except that all notes sound one octave lower than written.



above is a sample of "sounding" vs. "fingered" involving the I string.

- all harmonics are natural
- much of the work is string specific. some – not all – string indications are given
- accidentals apply only to the note they precede
- horizontal dotted lines indicate gradual change (bowing, tempo, dynamic)
- durational values are indicated in seconds when not in tempo with specified rhythmic values:
  - by length of beam with seconds indicated. timings in parenthesis are within total timings
  - or
  - by length of horizontal line with seconds indicated
- tempo indications are approximate maximums
- instructions for tapping on the body of the instrument are found in the score

▲ highest note possible on that string

*sul pont .estr.* extreme *sul ponticello*

⊖ slap pizz.

amplify with air microphone/s

# *descent, debris, debrief*

solo double bass  
Erik Lund

